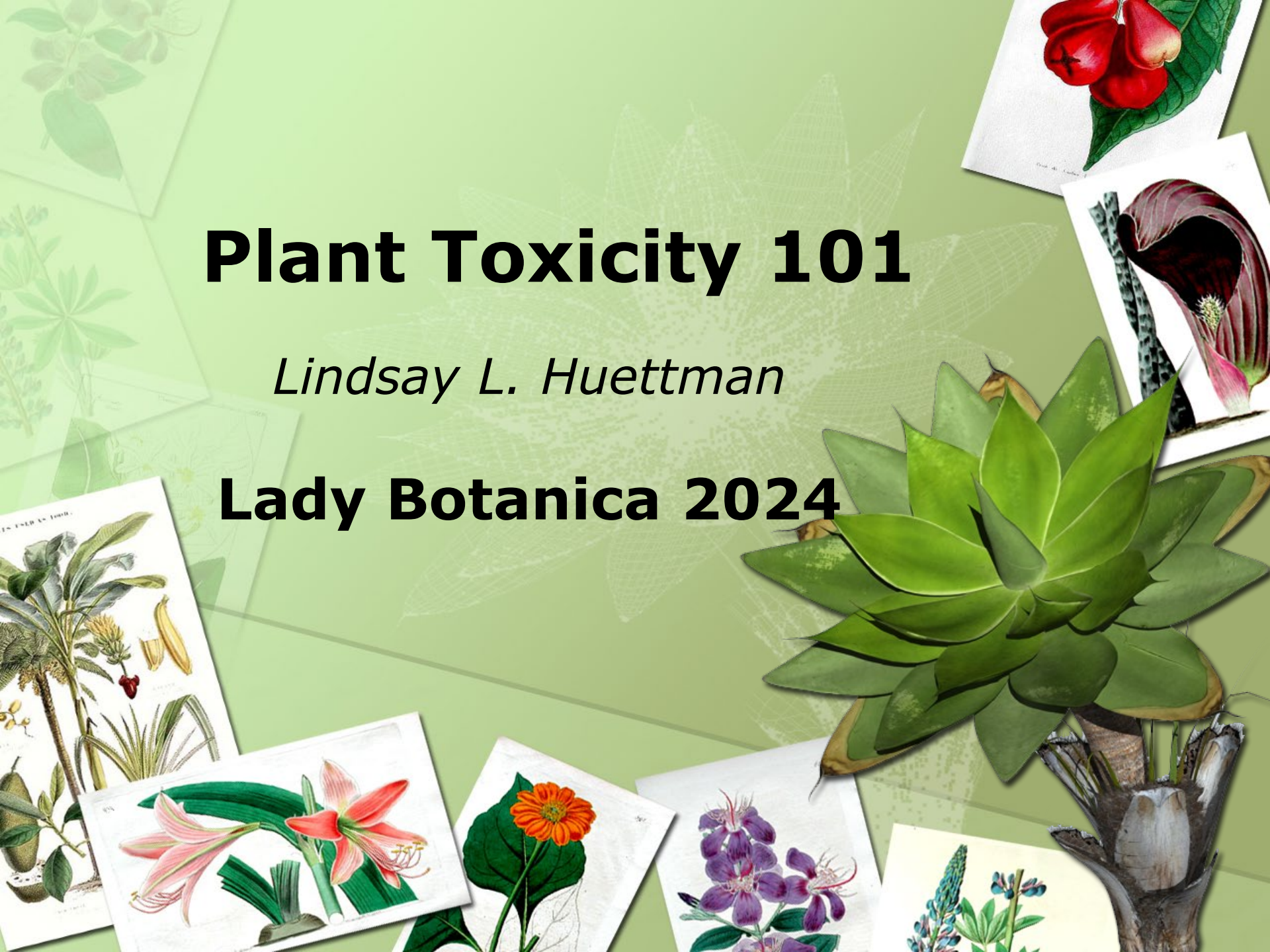


Plant Toxicity 101

Lindsay L. Huettman

Lady Botanica 2024

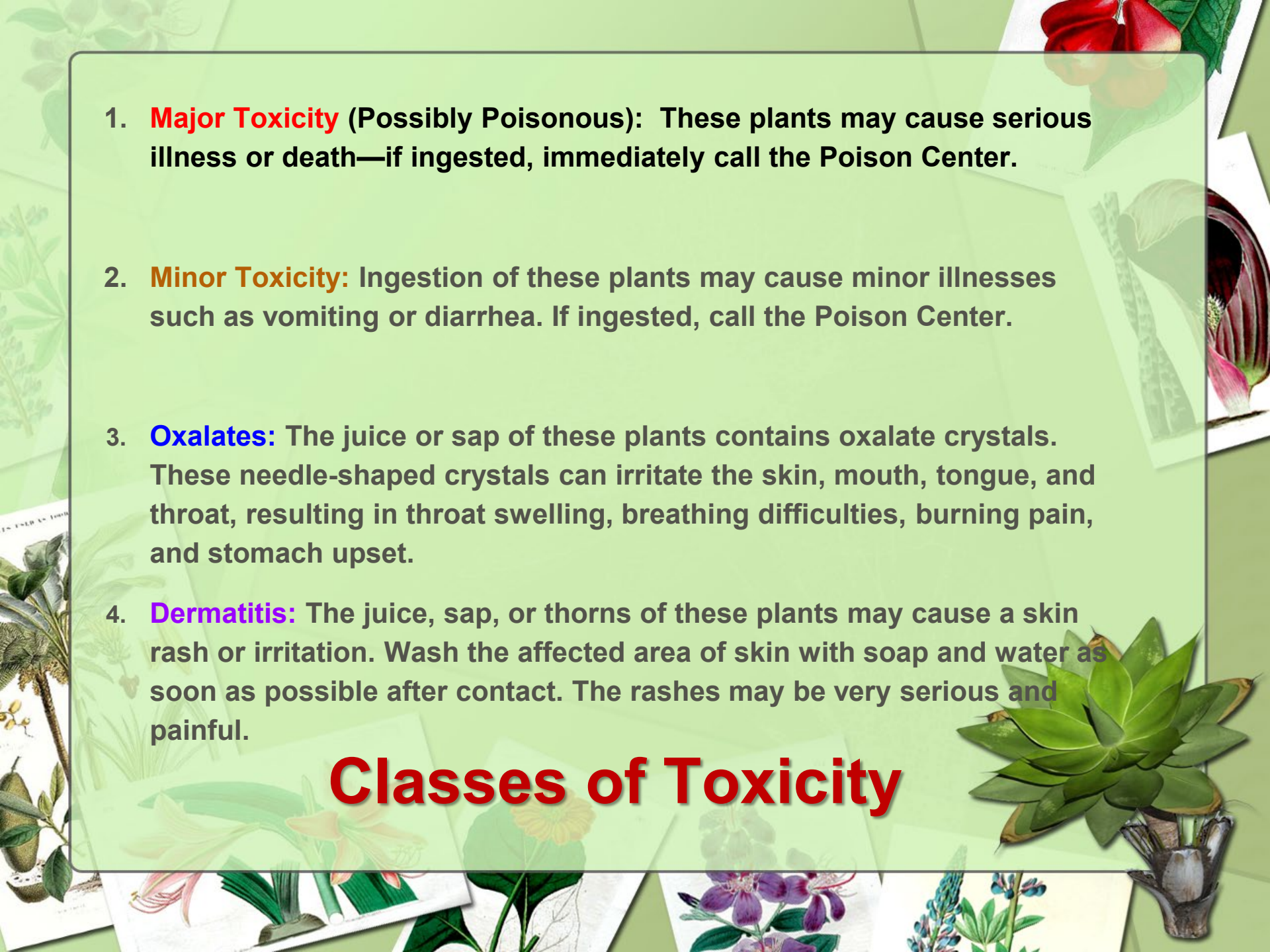


Low Toxicity to High Toxicity
(AKA "Poisonous")



1. **Major Toxicity** (Possibly Poisonous): These plants may cause serious illness or death—if ingested, immediately call the Poison Center.
2. **Minor Toxicity**: Ingestion of these plants may cause minor illnesses such as vomiting or diarrhea. If ingested, call the Poison Center.
3. **Oxalates**: The juice or sap of these plants contains oxalate crystals. These needle-shaped crystals can irritate the skin, mouth, tongue, and throat, resulting in throat swelling, breathing difficulties, burning pain, and stomach upset.
4. **Dermatitis**: The juice, sap, or thorns of these plants may cause a skin rash or irritation. Wash the affected area of skin with soap and water as soon as possible after contact. The rashes may be very serious and painful.

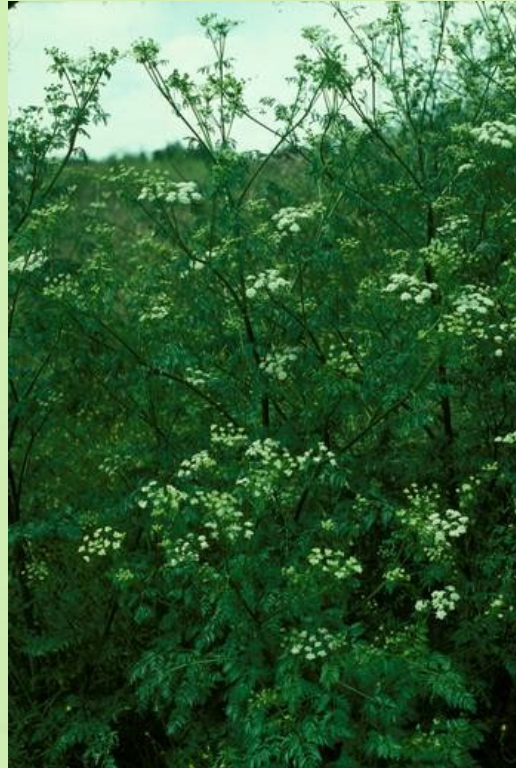
Classes of Toxicity



Poison Hemlock (*Conium maculatum*)

Carrot/Parsley family plants confused with *Lomatium sp.* and others that are edible/medicine.

**Deadly
Poisonous**



CLASS 1: Muscular, respiratory & digestive



Water Hemlock (*Cicuta sp.*)

Carrot/Parsley
family plants
confused with
Lomatium sp. and
others

**The most deadly
poisonous in US**

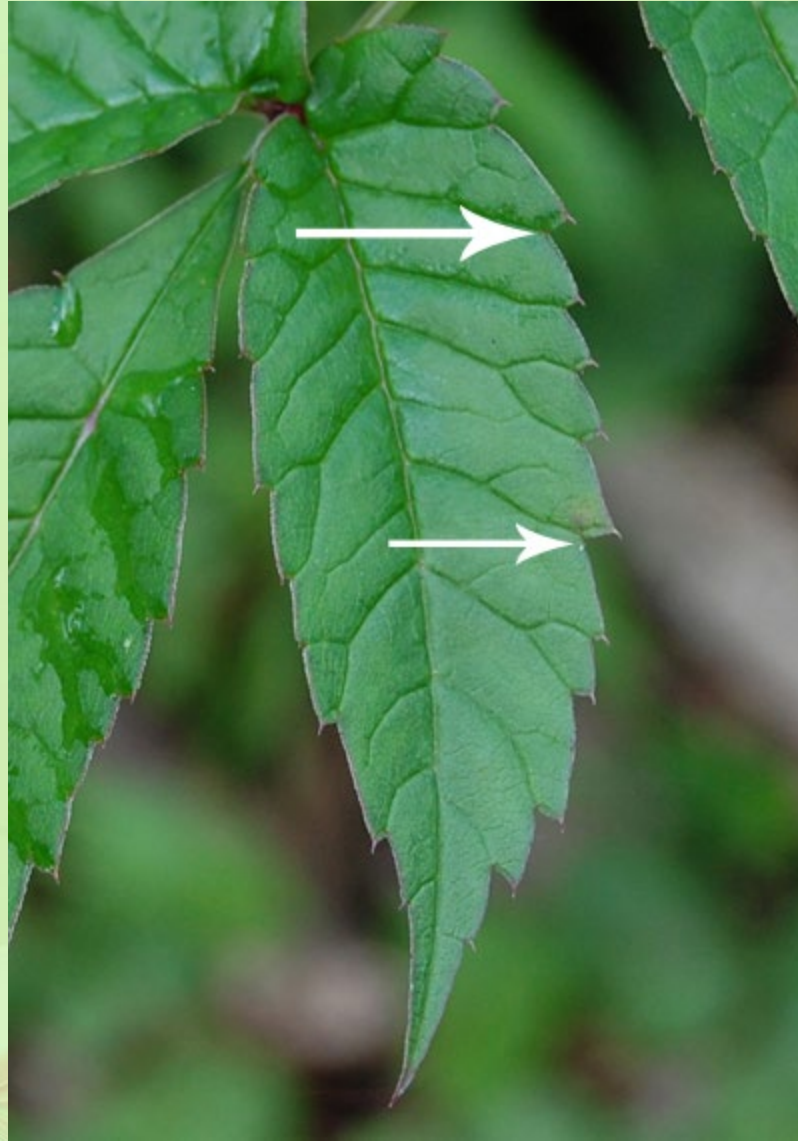
CLASS 1: Muscular,
Digestive, respiratory &
digestive



© G D Bebeau *Cicuta maculata* L.



**Vein to
crack
stay
back
Jack!**



Death Camas (*Zigadenus sp.*)



CLASS 1:
Muscular, Digestive,
Respiratory &
Nervous system





Lily family-Confused with Camas (*Camassia quamash*) and Wild Onions (*Allium sp.*)



False Hellebore (*Veratrum sp.*) Lily Family

CLASS 1:
Muscular,
Digestive,
Respiratory &
Nervous system



**YOUNG
PARTS-**
Loses
toxicity as
it gets
older but
still toxic



Foxglove (*Digitalis purpurea*) Figwort Family



CLASS 1: Cardiovascular,
digestive and respiratory



Lily of the Valley: *Convallaria majalis*

CLASS 1:
Cardiovascular,
digestive and
respiratory



Larkspur-(*Delphinium sp.*) Buttercup Family



CLASS 1: Digestive and respiratory

Yew Tree: *Taxus brevifolia*

“Berries” and Leaves



CLASS 1:
Cardiovascular,
digestive and respiratory



Baneberry (*Actaea rubra*)

**Confused with other 'red' yummy berries
Salmonberry and
Thimbleberry (*Rubus*
sp.), especially Red
Huckleberry (*Vaccinium
parviflorum*) mostly are
confused by beginners.**

**Baneberry is
considered TOXIC and
used as a medicinal
ONLY by professionals.**

CLASS 2 Minor Toxicity



Iris or Yellow Flag (*Iris pseudacorus*)

Iris Family- Can be confused with Cattail (*Typha latifolia*) toxic if eaten in large doses!



CLASS 2 Minor Toxicity

Lupines (Pea Family)

**Toxic and
is usually
consumed
by
livestock**

CLASS 2 Minor Toxicity



Others to be aware of...

Nightshade family plants (Solanum sp.)



Rhododendron (Rhododendron sp.) Heather Family



Vetches (Vicia sp.) Pea Family



Alpine Sweet Vetch-Chris M



Plant Families that have Poisonous and Toxic Members

- **Carrot/Parsley family**-stay away until you know this family well. Poison and Water hemlock are in this family!
- **Lily family**
- **Pea Family**
- **Orchid Family**
- **Buttercup Family**
- **Nightshade Family**

There are more toxic plants than in this presentation...educate yourself and learn GOOD ID skills!



What do I do if I think I have consumed a poisonous plant?

- 1. Stay CALM**
- 2. Do NOT induce vomiting**
- 3. Have a sample of plant and an idea of what you thought you were eating OR positive ID on toxic/poisonous plants**
- 4. Call Poison control and do what they tell you!**

**IN CASE OF A POISONING EMERGENCY in WA
(800) 222 1222**

